



# WE KNOW COUNCILS

October 2020





## Fred Drouin

ES2 Managing Director

M. 0488 701 591

[www.linkedin.com/in/frederic-drouin-001aa4](https://www.linkedin.com/in/frederic-drouin-001aa4)



# OUR CAPABILITIES



## Cyber Security

Trusted Cyber Security services that aid organisations to understand and defend against the ever-changing environment of cyber threats.



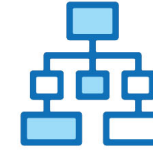
## Business Solutions

Helping organisations reach their full potential through the design, deployment and evolution of their data architecture and systems.



## Cloud Solutions

Transforming organisations and the scalability of their operations through well-architected, secure and agile Cloud Solutions.



## Infrastructure and Network

Well-architected and carefully engineered solutions to organisations' connectivity, communication and operation.



## Cyber Incident Response 24/7

Expert cyber advice and support never more than a phone call away available 24/7/365.



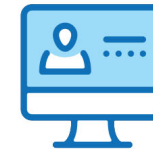
## IT Managed Services

Ensuring organisations' systems stability, security and reliability through local and onsite support and solutions.



## Business Consulting

Leveraging business experience, understanding and IT leadership to provide strategies and solutions with real business outcomes.



## Vendors and Licensing

Helping organisations find the right license agreement and/or technology product through expert advice.

# OUR DIFFERENTIATORS

## Largest Cyber Security Services Provider in WA

ES2 is the largest *WA Owned* Cyber Security Services Provider in Western Australia, covering a broad range of security skills through its highly experienced local permanent team.

## Buy Local

ES2 is the only *WA Owned* Cyber Security Services Provider with 2 offices in Perth CBD, committed to supporting local suppliers and West Australians through a number of community initiatives.

## Local Cyber Incident Response 24/7/365

ES2 offers the only local Cyber Incident Response Hotline Service (24x7x365) in Australia.

## Local Outsource Security Monitoring

ES2's Security Monitoring Services deliver real-time monitoring, correlation and expert analysis of security related activity across your network.

## Microsoft Gold Partner

Proven knowledge and expertise designing, building, deploying and maintaining solutions and systems for organisations through Microsoft's Full Technology Stack from MS SQL to Office 365.

## Cloud Security (AWS / Azure)

ES2 leverages on its extensive experience and pedigree in Cyber Security and Business Solutions to offer a number of services to make your organisation's transition to the Cloud smoother, faster and more secure whilst achieving your business goals.

## Training

ES2 deliver business value and offers training to all its clients to ensure all engagements are properly transferred to our clients' stakeholders.

## Managed Services

All of ES2's implementations are supported by our Managed Services to ensure that the environment delivered continues to be optimal and client satisfaction is met post delivery.

## ES2 People

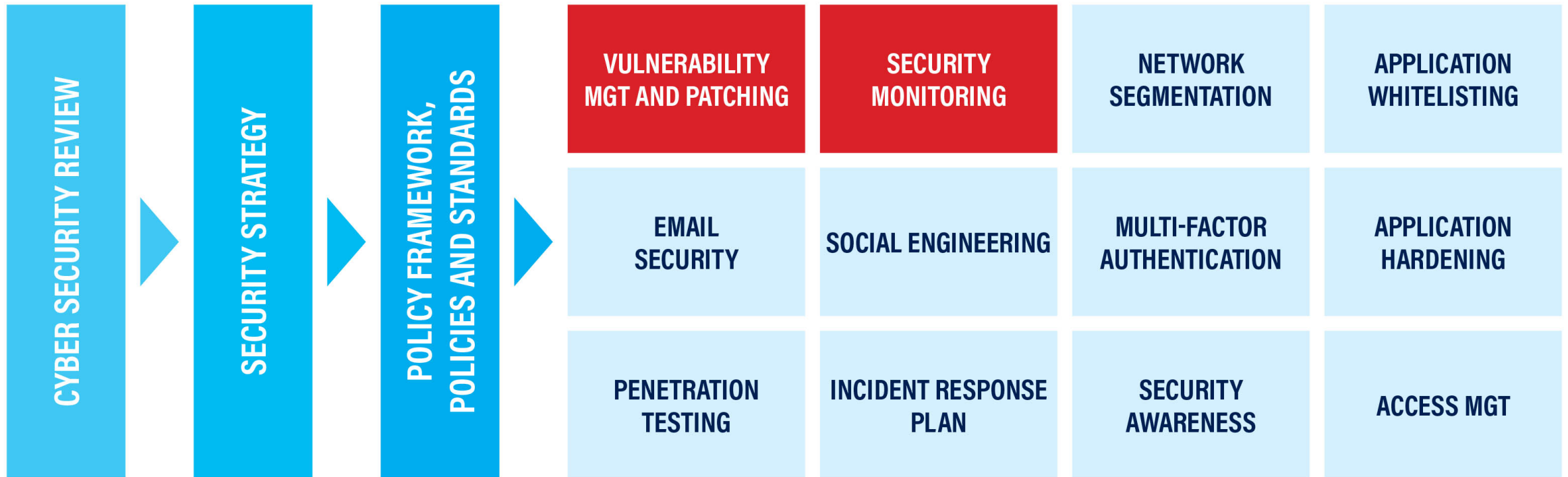
ES2 has access to an extensive pool of leading IT and Cyber Security professionals through its recruitment entity ES2 People, ensuring the high standard and uninterrupted delivery of our services.

## ES2 Kids

ES2 Kids is the only not-for-profit community based initiative in WA, fully supported by ES2, aimed at providing Cyber Security Awareness to K-12 students.

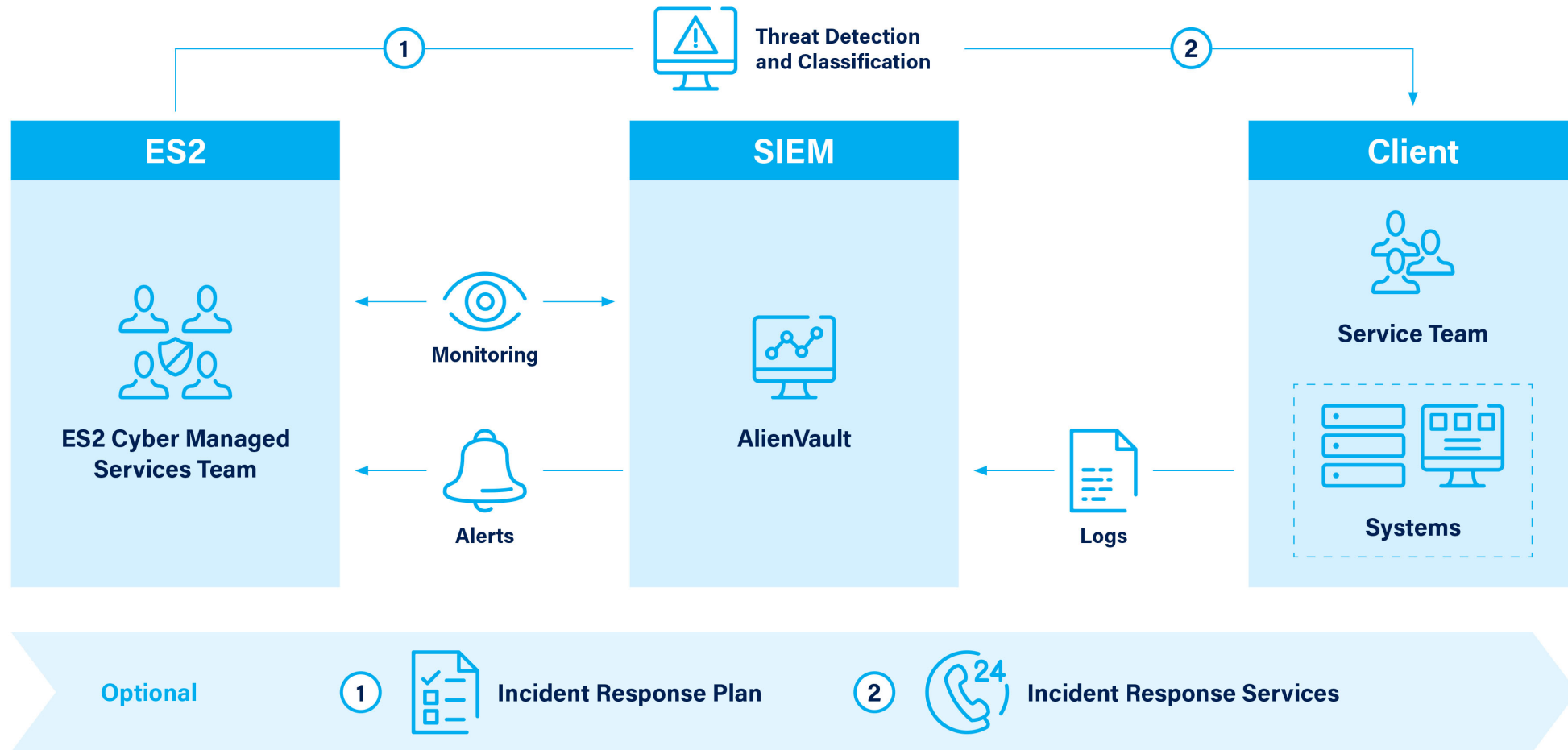


# ES2 CYBER SECURITY ROADMAP





# ENTERPRISE PROACTIVE MONITORING OVERVIEW





## Andy Battle

ES2 Chief Technology Officer

M. 0449 985 169

[www.linkedin.com/in/andybattle/](https://www.linkedin.com/in/andybattle/)

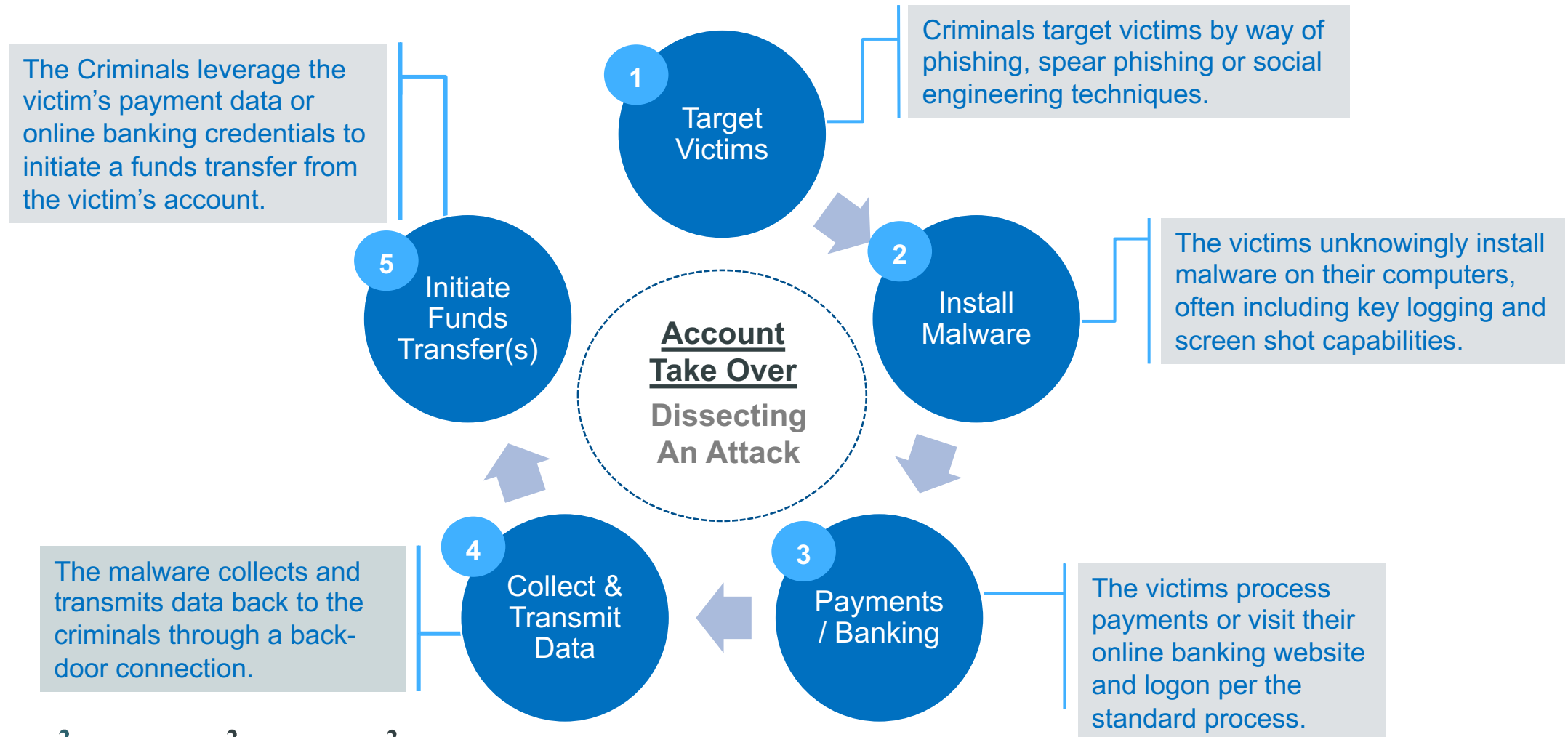


- Account Takeover
- Ransomware
- Supply Chain Attack
- Operating System Exploit





# DISSECTING AN ATTACK



# KEEPING UP WITH COMPLIANCE – SECC5



Applying software patches for operating systems and third-party applications in a timely manner



User accounts are always authorised with appropriate access ensuring minimal administrator privileges exists



Implementing multi-factor authentication techniques for the network for remote connections and on premises



Hardening the configuration of applications and software, including Microsoft Office 'macros'



Implementing a password filtering solution to blacklist commonly used and poor passwords

# GROWING BUSINESS NEEDS



- Payment Systems
- Public Services
- Smart City / IoT



- **Securing Access**
- **Access Management**
- **Logging & Event Monitoring**





- Confidential Data
- Breach Readiness
- Incident Response



---

[WWW.ES2.COM.AU](http://WWW.ES2.COM.AU)

